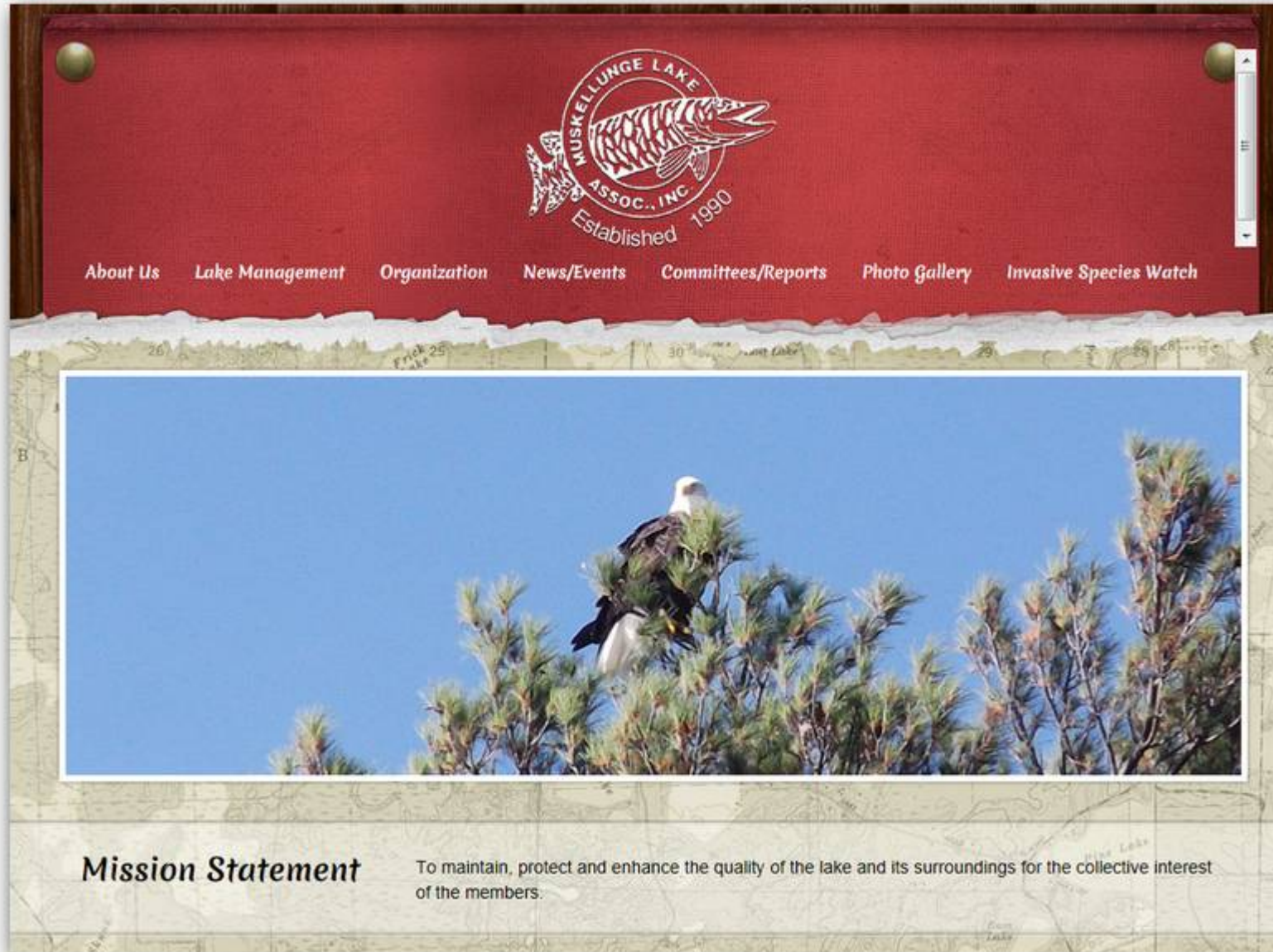


Muskellunge Lake Association



Our Lake Community WEB Site


www.muskellunge.com



MUSKELLUNGE LAKE ASSOC., INC.
Established 1990

[About Us](#) [Lake Management](#) [Organization](#) [News/Events](#) [Committees/Reports](#) [Photo Gallery](#) [Invasive Species Watch](#)

Mission Statement To maintain, protect and enhance the quality of the lake and its surroundings for the collective interest of the members.



Always on the home page

Mission Statement To maintain, protect and enhance the quality of the lake and its surroundings for the collective interest of the members.

News & Updates

Boat parade success
Sunday, July 8th, 2012

What a sight on Muskellunge Lake on July 4th. We had nineteen boats decorated for the occasion making a grand tour of the lake. The folks in the boats and the dozens of lakeside spectators that came out all had great fun. If you have some pictures of the event you could share, send them to musky.board@gmail.com . They...

[Read More >](#)

Events

Annual Meeting at VFW Hall
Sat. July 21st, 2012 9:00 – Onterra will report on Muskellunge Lake data from the CLASS project.

Board Meeting @ Eagle River Airport
Mon. Aug 27th, 2012 @ 9:00am

Where We Are

First Annual Boat Parade
Wednesday, June 13th, 2012

In order to accomodate the parade in Eagle River we have moved the timing for our Boat Parade to 3:00 on July 4th. We can always use more entrants, just contact Ruth Cerull and come join in the parade. If you are not in the parade this year, be sure to come on down to the lake front and...

A continuing list of the latest news and notable. Check here often.

Upcoming Mark your calendar

Google and WDNR maps



Something for everyone



Enter here for Lake Owners
private area

Lots of interesting WEB links

musky.board@gmail.com



Password Area

McCabe Lake 1988

O L D **Lake Owner's Data** S U G

Please contact a MLA board member to get your login information to access this area.

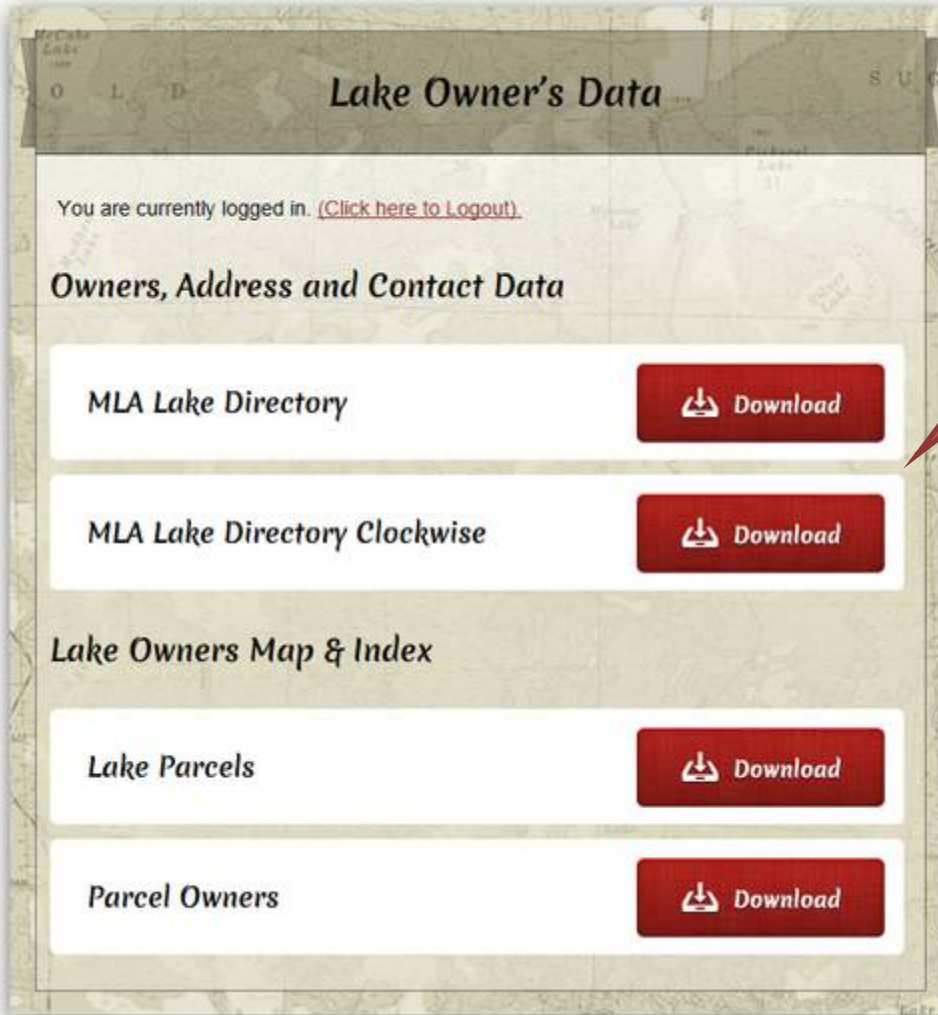
Username

Login

Contact
musky.board@gmail.com
For Login Info



Lake Owner's Private Data

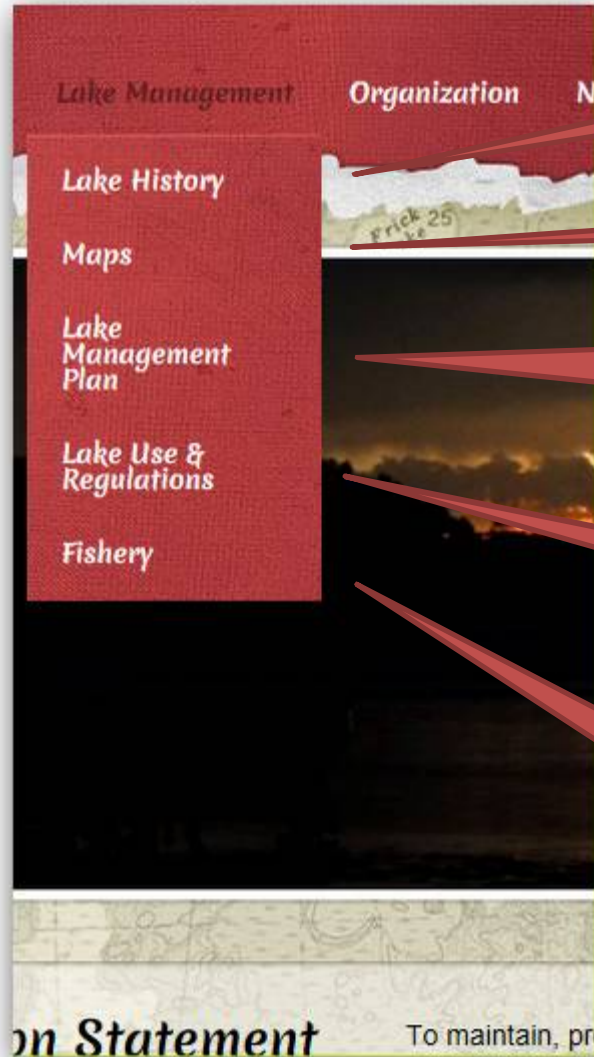


The screenshot shows a web interface titled "Lake Owner's Data". At the top, it says "You are currently logged in. [\(Click here to Logout\)](#)". Below this, there are two main sections. The first section is "Owners, Address and Contact Data" and contains two items: "MLA Lake Directory" and "MLA Lake Directory Clockwise". Each item has a red "Download" button with a download icon. The second section is "Lake Owners Map & Index" and contains two items: "Lake Parcels" and "Parcel Owners". Each item also has a red "Download" button with a download icon. The background of the interface is a light-colored map.

Contact information about your lakeside neighbors



Our lake's entire history as we know it



An interesting bit of history

Want a map?

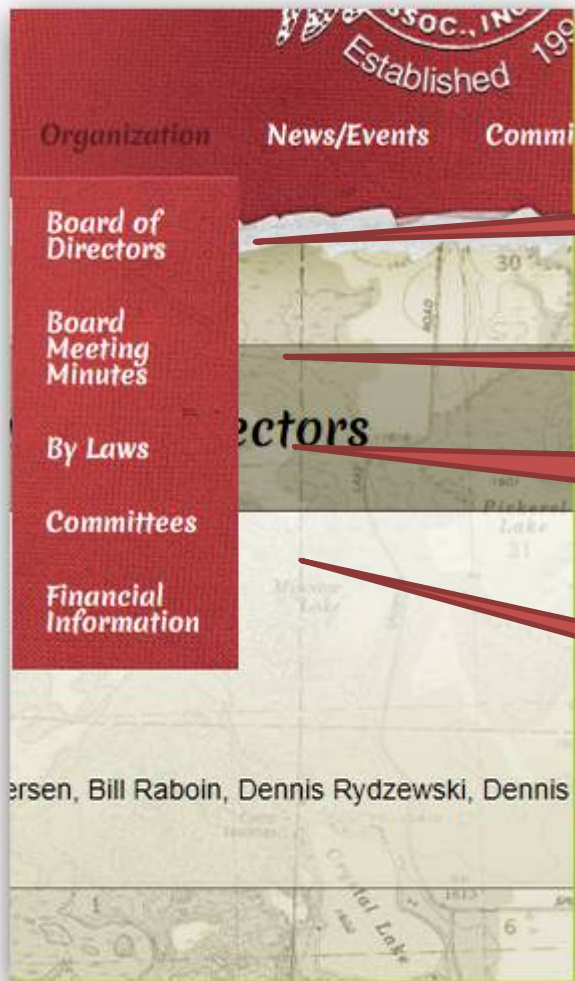
Every official report on
our lake dating back to
1983

A little courtesy in the neighborhood
please.

According to the
WDNR



The workings of the MLA



Who

Current and past meeting minutes

The official stuff

Committee responsibility



All about news at the lake



What is upcoming

Missed a Newsletter ?

Having some fun
around the lake

Who are those
people ?



Your working committees

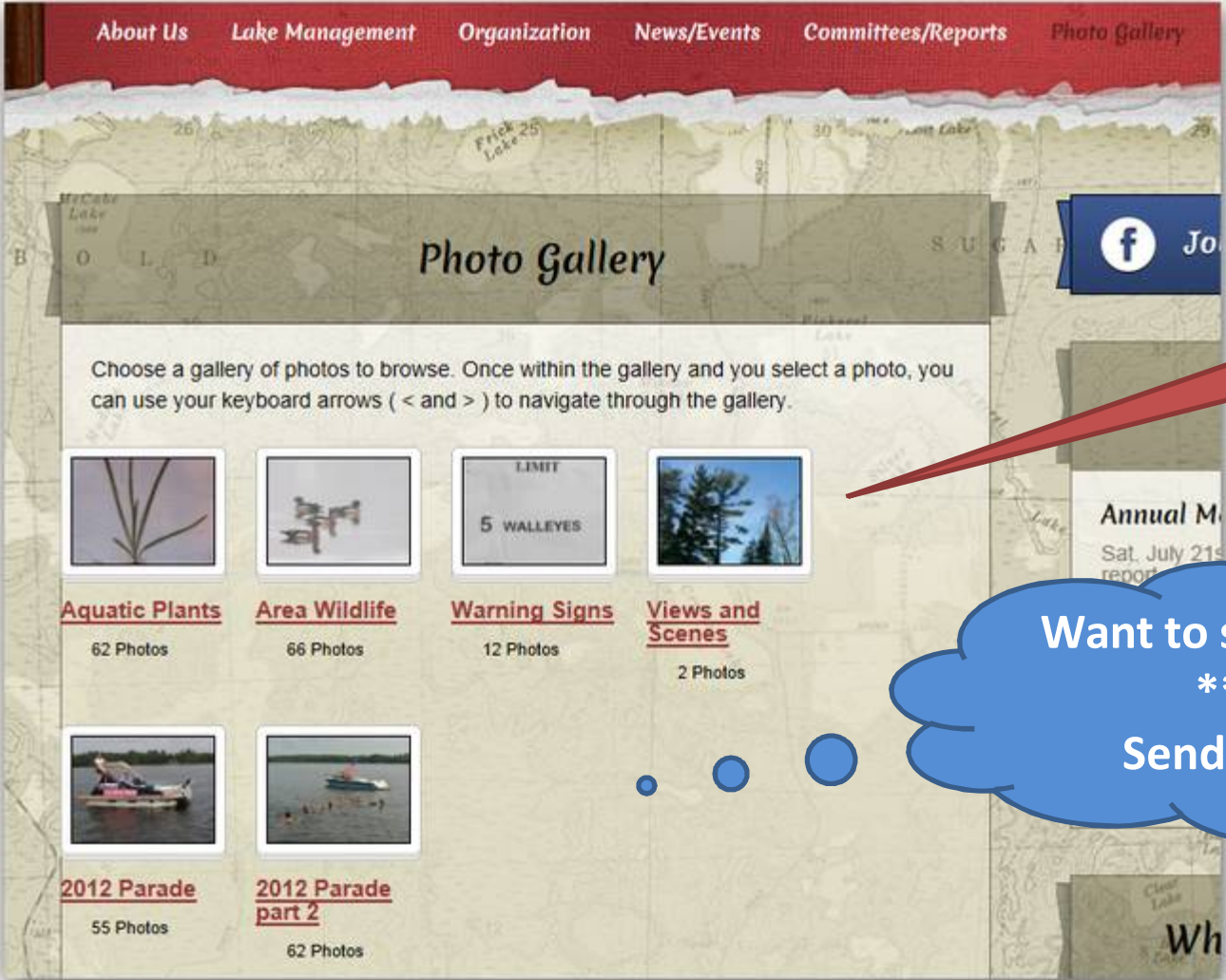


This is where the real work gets done. The volunteers that lead these committees share current reports as well as concerns.

Where can I help ?
Look up a committee of your interest here.



Photos and Fun at the lake



So who doesn't like a few pictures ?

Want to see more ?

Send 'em in

Protecting our lake

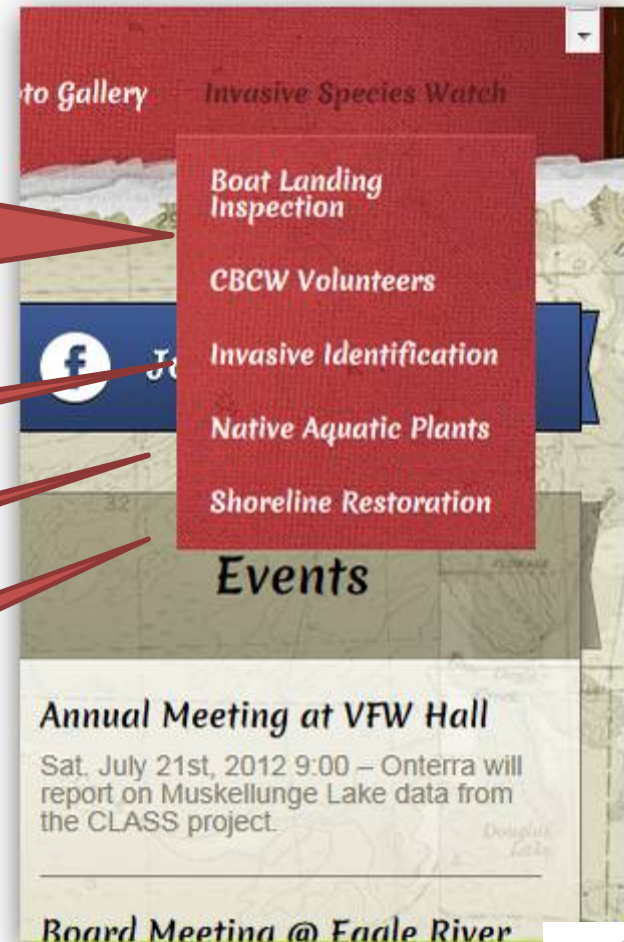
Join us for a few hours at the landing to help keep *Invasive Species* out of our lake.

Everything you need to know is here

Is this a bad weed ?

These plants are native to our lake.

How you can help



musky.board@gmail.com

- Questions to any board member or committee
- Comments / suggestions for the webmaster
- Photos from around the lake
- Committee reports
- News, events
- Fun web links
- Facebook updates



Current Web Stats - 7/15/12

- Launched March 15th
- 473 visits to the site
- 201 unique visitors
- 3000+ page views
- 6 minutes avg. visit time
- Most popular
 - Photo gallery
 - Maps



Come back
often !





Thank-you

www.muskellungelake.org



Find us on
Facebook

Prepared by: Jeff Rappold 7/21/12